

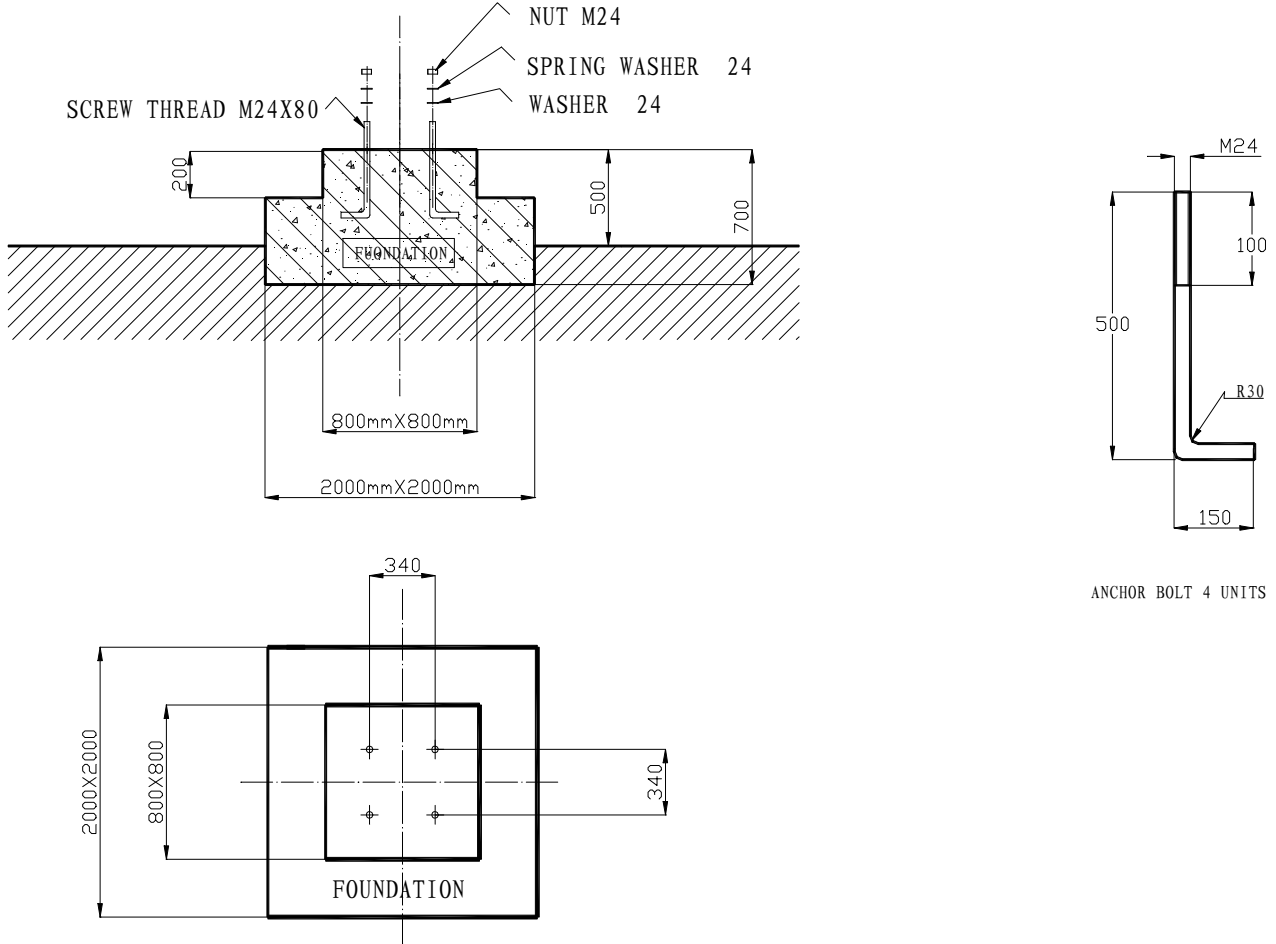
C-Band Extended C-Band Ku-Band

SUMAN SATELLITE COMMUNICATION ANTENNA

MODEL: SM-T3.0RC SM-T3.0RC/E SM-T3.0RK

3.0M

FOUNDATION DRAWING



(For the Ground)

Remark:

1. The foundation is specially designed and made for SM-T3.0R 3.0m antenna.
2. Quality concrete should be used to make this foundation.
3. The foundation is designed to withstand the wind speed of 55m/s and the antenna should be locked to the sky when the wind speed over 55m/s.
4. Load capability of this foundation:
Pulling-out force ----- 3000kg max.
Pressure force ----- 4800kg max.
5. This foundation is suitable for the ground only and other design should be needed to erect the antenna on top of buildings

SUMAN SATELLITE TECHNOLOGY COMPANY